

Figure 1

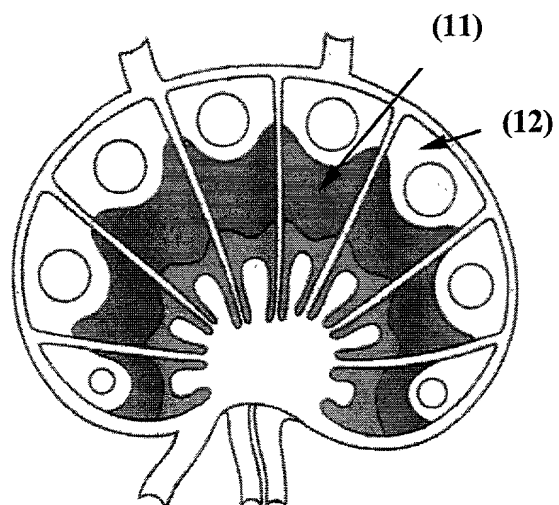
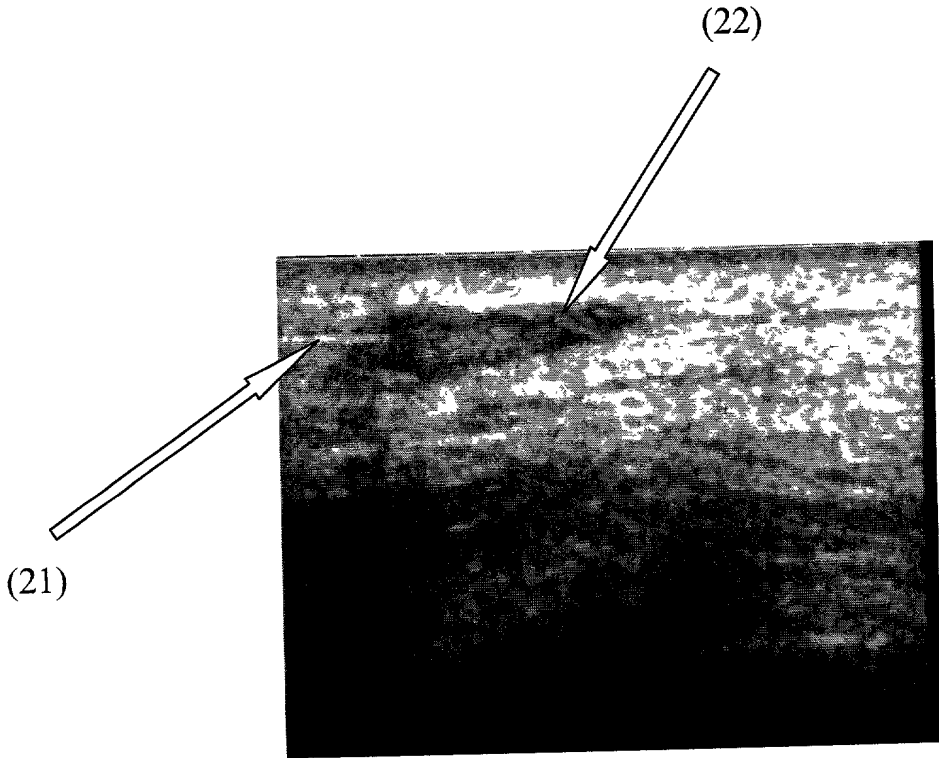
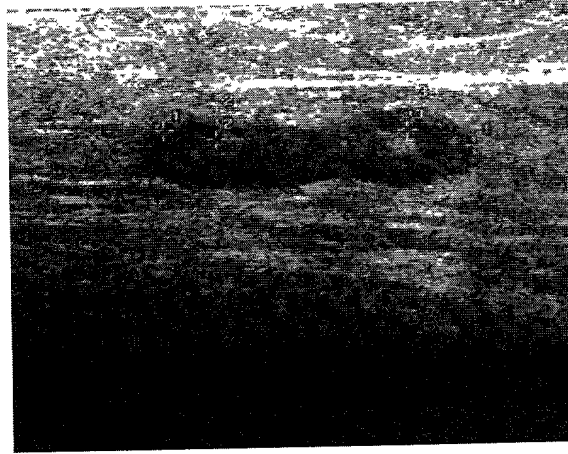


Figure 2



scanned with a JEOL JSM-6400 scanning electron microscope (SEM) at 15 kV. The images were obtained using a secondary electron detector (SED) and a backscattered electron detector (BSE-ED). The images were processed using a combination of image enhancement techniques, including contrast and brightness adjustments, to highlight the surface morphology. The scale bar represents 10 micrometers.

*Figure 3*



0 1 2 3 4 5 6 7 8 9 10 11 12 13 14 15 16 17 18 19 20 21 22 23 24 25 26 27 28 29 30 31 32 33 34 35 36 37 38 39 40 41 42 43 44 45 46 47 48 49 50 51 52 53 54 55 56 57 58 59 60 61 62 63 64 65 66 67 68 69 70 71 72 73 74 75 76 77 78 79 80 81 82 83 84 85 86 87 88 89 90 91 92 93 94 95 96 97 98 99

Figure 4



Figure 5

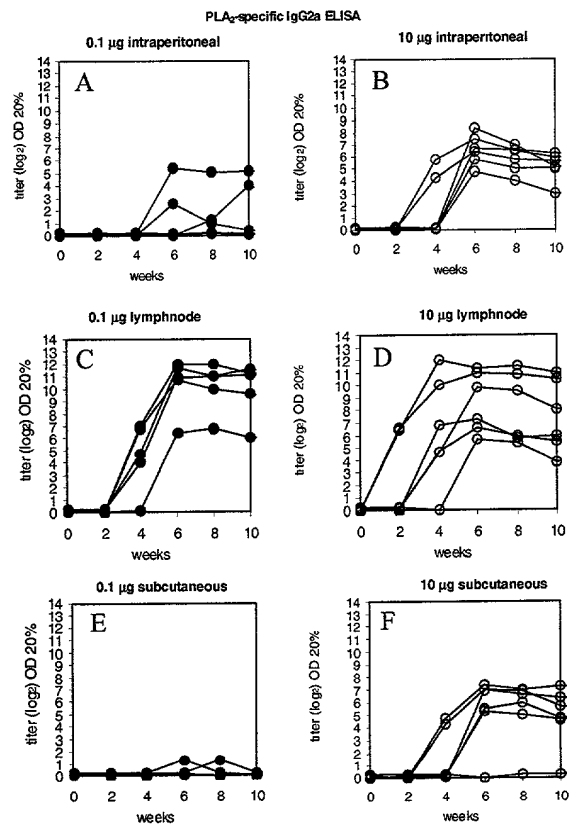


Figure 6

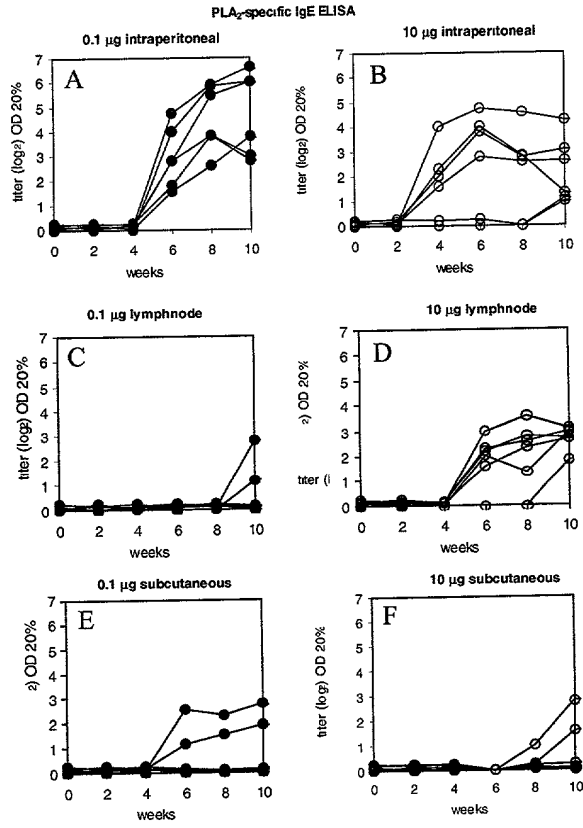


Figure 7

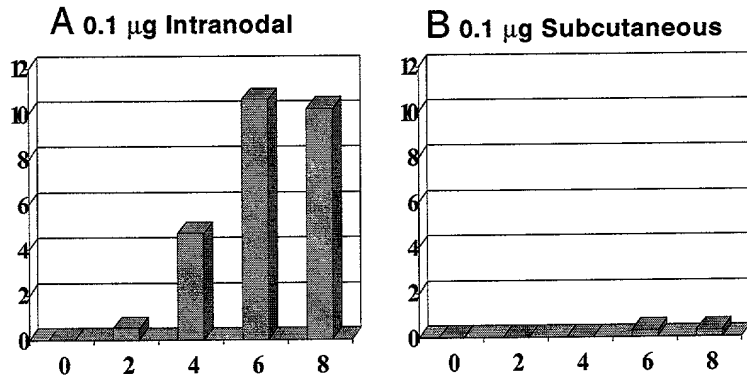


Figure 8

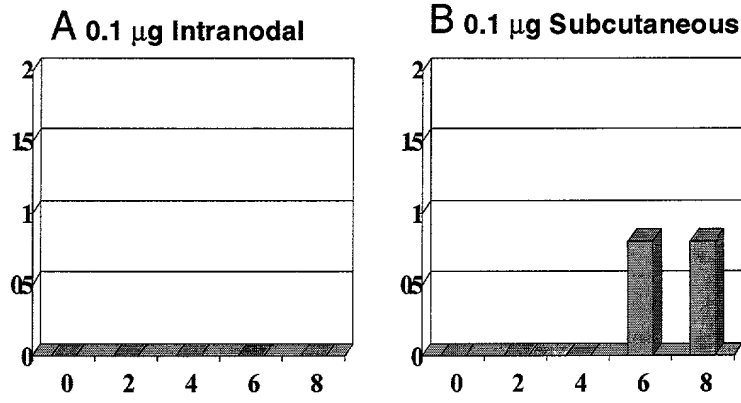


Figure 8 consists of two bar charts, A and B, showing data for 0.1 µg Intranodal and 0.1 µg Subcutaneous treatments. Both charts have a y-axis ranging from 0 to 2 with increments of 0.5 and an x-axis with time points 0, 2, 4, 6, and 8. Chart A shows zero values for all time points, while Chart B shows values around 0.8 at 6 and 8.